

2025 Official Guide



ROCK COUNTY



Rock County Tourism Council



Big Hill Park in Beloit, WI

Photo courtesy of Visit Beloit

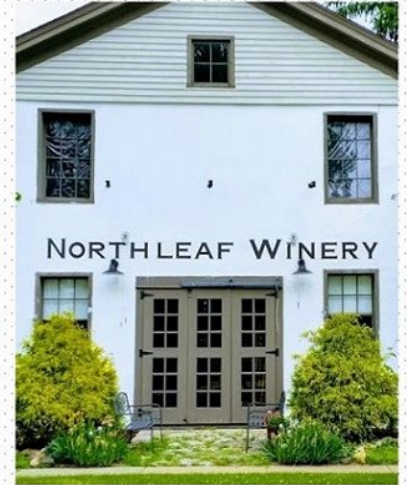
[VISIT US AT ROCKCOUNTY.ORG](http://ROCKCOUNTY.ORG)

232 SOUTH JANESVILLE STREET MILTON WISCONSIN 53563 ~ 608-580-0575 ~ WWW.NORTHLEAFWINERY.COM



NorthLeaf Winery

WINERY, TAPROOM, EVENT SPACE & DECK



WELCOME!

MON-SAT 11-7—MUSIC FRIDAYS 6:30-9:30—SUN 11-5

MILTON KOA

Family Campground

872 E Hwy 59
Milton, WI 53563

- 70' - 100' Drive thru sites with 50 amp power & sewer hookup
- Playground
- 7,500 sq. ft. Clubhouse
- Arcade
- RV, Tent, and camping sites available



To reserve your spot today CALL 800-469-5515



www.HiddenValleyMilton.com



Goodrich Antiques & Vintage Uniques

742 E Madison Ave. Milton, WI
608-868-3651

Ask about our Guest Inn

Home Decor - Collectibles - Furniture



Hours: Fri & Sat 10am - 5pm &
Sun 12pm - 5pm

Red Rooster



Home Furnishings & Gifts

Peddlers Loft & Cellar

40+ Vendors



OLD JUNCTION MILL

613 W. Madison Ave.
Milton, WI
608-868-5555
oldjunctionmill.com

Hours:
Tues-Sat 10-5
Sun 12-4

Join us on [redroostermilton](https://www.facebook.com/redroostermilton)

2025 Rock County Guide

Rock County offers something for everyone - welcome to Wisconsin's front porch!

Table of Contents:

- Ongoing Events.....2-3
- Calendar of Events.....4-6
- Entertainment.....7
- Rock County Parks.....8
- Parks Map.....9
- Trails Map.....10
- Boat Launches & Water Access Points.....11
- Rock County Recreation.....12
- Fall Fun.....12
- Winter Wonderland.....13
- COMMUNITY PAGES**
- Orfordville, Clinton, Cooksville,
Town of Beloit.....14
- Beloit.....15
- Edgerton.....16
- Evansville.....17
- Janesville.....18
- Milton.....19
- Sample Itinerary Page.....20
- Rock County Accommodations.....21



See the full interactive guide
online at rockcounty.org



THE GLASS GARDEN
LLC

25 W Milwaukee St Janesville, WI

Stained glass panels, lamps, candleholders,
bowls, and fused glassware! A variety of
supplies and regular classes available.

(608) 754 - 3718 www.eglassgarden.com

This guide was *Curated by Cami*. curatedbycami.com



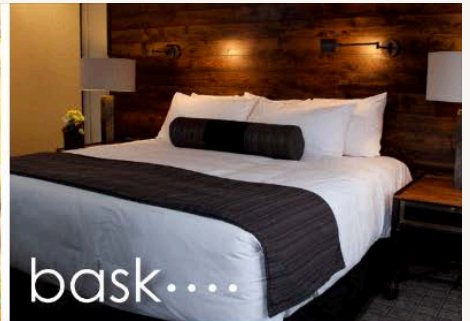
shop...



explore...



dine...



bask....

plan your trip today at downtownbeloit.com

DOWNTOWN BELOIT

All-America City Award Winner • Most Romantic Main Street Award Winner

2025 Ongoing Events

BELOIT

Sky Carp Baseball. April - September. High-A affiliate of the Miami Marlins. ABC Supply Stadium, 217 Shirland Ave, Beloit. MILB.com/beloit

Beckman Mill Guided Tours. May-October. Every Saturday & Sunday from 1-4pm. Group tours by reservation. 1160 County Highway H, Beloit. beckmanmill.org.

Farmers' Market. May-October. Every Saturday from 8am-1pm, rain or shine. Award-winning Market with more than 100 vendors. State St & Grand Ave in Downtown Beloit. downtownbeloit.com.

Fridays in the Park. May-September. Every Friday from 1130am-130pm. Purchase lunch & enjoy live music in the Park in Downtown Beloit. downtownbeloit.com

Dancing at Harry's Place. June-August. Every other Monday evening from 7-9pm. Enjoy free dance lessons on the riverfront. Harry Moore Pavilion, Riverside Park, Hwy 51, Beloit. friendsofriverfront.com

Music at Harry's Place. June-August. Most Fridays at 7pm. Free concert series and food trucks on the riverfront. Harry Moore Pavilion, Riverside Park, Hwy 51, Beloit. friendsofriverfront.com

Beloit Winter Crafter & Farmers' Market. November-April. Every Saturday from 9am-12pm, indoors. Downtown Beloit Association. 557 E Grand Ave, Beloit. downtownbeloit.com

EDGERTON

Sterling North Museum Tours. Sundays, May-October. Childhood home of the author of children's book and Disney film "Rascal", Sterling North Museum, 409 W Rollin St, sterlingnorthsociety.com

Fall Fun at Hermanson Pumpkin Patch. Mid-September-October. Hermanson Pumpkin Patch, 127 Co Hwy N, (608) 751-9334, hermansonpumpkinpatch.com

MILTON

Live Music at Northleaf Winery. Every third Friday thru April. 232 S Janesville St, Milton. (608) 580-0575. northleafwinery.com

Live Music at Northleaf Winery. Fridays Memorial Day - Labor Day. 232 S Janesville St, Milton. (608) 580-0575. northleafwinery.com

Milton House Tours. Jun 12-Aug 31. 1844 Stagecoach Inn - part of the Underground Railroad. Milton House Museum, 18 S Janesville St, Milton. (608) 868-7772. miltonhouse.org

Concerts at the Gathering Green. Summer. The Gathering Place, 715 Campus St, Milton. tgpmiton.com

JANESVILLE

Forest of Freaks. Weekends in October. The Edge Paintball & Airsoft, 5946 US-51, Janesville. wescaredyou.com

Library Art Exhibit. Ongoing. Hedberg Public Library, 316 S Main St, (608) 758-6600. hedbergpubliclibrary.org

Winter Farmers Market. 1st Saturdays January - April. Uptown Janesville (Janesville Mall), 2500 Milton Ave, (608) 289-9292, janessvillefarmersmarket.com

Birds & Blooms Art Exhibit. March 11 - April 17. Janesville Performing Arts Center, 408 S Main St, janessvilleartleague.org

Light in the Darkness Art Exhibit. January 7 - March 6. Janesville Performing Arts Center, 408 S Main St, janessvilleartleague.org

Uptown Mega Market. 3rd Friday, Saturday & Sunday, January - April. Uptown Janesville (Janesville Mall), 2500 Milton Ave.

Hedberg Harmony: Rock River String Band. 4th Fridays. Hedberg Public Library, 316 S Main St, (608) 758-6600, hedbergpubliclibrary.org

Janesville Jets Hockey. Select weekends September - April. Janesville Ice Arena, 821 Beloit Ave, (608) 752-5387, janessvillejets.com

Winter StoryWalk®. January 1 - March 20. Children's book laid out along the trail, Robert O. Cook Memorial Arboretum/JSOL, 3550 W Cty Hwy A, (608) 755-3030

City Dreams Winter Art Exhibit. January 9 - March 3. Janesville Performing Arts Center, 408 S Main St, janessvilleartleague.org

Comedy Cabin. Year round live comedians. 120 N Crosby Ave Suite 4. cabinlaughs.com

Lincoln-Tallman Museum Tours. Thursday - Saturday. Tour this beautiful Italianate-style home built in the 1850s, Rock County Historical Society, 426 N Jackson St, (608) 756-4509, rchs.us

Rock County Legacies Exhibit. Thursday - Saturday. Stories and artifacts from the Janesville General Motors. Rock County Historical Society, 426 N Jackson St, (608) 756-4509, rchs.us

Birds and Blooms Spring Art Exhibit. March 4 - April 7. Janesville Performing Arts Center, 408 S Main St, Janesville. janessvilleartleague.org

Spring StoryWalk®. March 20 - June 20. Children's book laid out along the trail, Robert O. Cook Memorial Arboretum/JSOL, 3550 W Cty Hwy A, Janesville. (608) 755-3030

Janesville Farmers Market. Saturdays. May - October. Market, Janesville Town Square, 21 Dodge St, (608) 289-9292, janessvillefarmersmarket.com

Garden Art Exhibit. Mid-May thru mid-September. Garden Art Exhibit, Rotary Botanical Gardens, (608) 752-3885, rotarybotanicalgardens.org

Rock Aqua Jays Water Ski Show. Wednesdays & Sundays, Memorial Day weekend - Labor Day. National Champion team. Traxler Park, 600 N Main St, rockaquajays.com

Music at the Marv. Tuesdays, June-August. Free concert series featuring local and regional acts in a variety of genres. Marvin W Roth Community Pavilion at Courthouse Park. 51 S Main St, (608) 755-3030, downtownjanesville.com

Summer StoryWalk®. June 21 - September 20. Children's book laid out along the trail, Robert O. Cook Memorial Arboretum/JSOL, 3550 W Cty Hwy A, Janesville. (608) 755-3030.

Skelly's Sunflower Experience. Mid-July thru mid-August. Five acres of sunflowers, with viewing platforms and Prop Stops for cute photos, Skelly's Farm Market, 2713 S Hayner Rd, (608) 757-1200. skellysfarmmarket.com

Skelly's Corn Maze & Fall Festival. August 31 - October 31. Two corn mazes with GPS enabled map for your smartphone; many family-friendly activities plus retail store and bakery, Skelly's Farm Market, 2713 S Hayner Rd, Janesville. (608) 757-1200. skellysfarmmarket.com

Fall StoryWalk®. September 22 - December 21. Children's book laid out along the trail, Robert O. Cook Memorial Arboretum/JSOL, 3550 W Cty Hwy A, Janesville. (608) 755-3030

Holiday Art Show & Sale. November 18 - December 31. Janesville Performing Arts Center, 408 S Main St, janessvilleartleague.org

Holiday Light Show. November 28 - December 30. Stroll through a winter wonderland of over 1.5 million twinkling lights in this fun family activity, Rotary Botanical Gardens, (608) 752-3885, rotarybotanicalgardens.org

Holiday Tree Show. November 28 - December 30. More than 100 trees and decorations throughout the Lincoln-Tallman House, each beautifully adorned, Rock County Historical Society, 440 N Jackson St, (608) 756-4509, rchs.us

Striegel Light Show. December. Home decorated with 20,000 lights synchronized to music on 90.9FM, Striegel Home, 3767 Stone Ridge Dr, facebook.com/striegelights

EVANSVILLE

Evansville Jays Home Talent Baseball Games. May–August, games typically at 7:30pm Thursdays and 1pm Sundays. Home games at Jay’s Nest in Leonard Leota Park Upper Baseball Diamond. facebook.com/evansvillejays

Creekside Place Art Exhibits. Call ahead for hours. Creekside Place Gallery, 102 Maple St, Evansville. (608) 882-0407. info@creeksideplace.org, creeksideplace.org

Creekside Cruise Night. First Thursday May–September, 5–8pm. Show off your ride with pride! Creekside Place, 102 Maple St, Evansville. 882-0407, facebook.com/creeksidecruise, creeksideplace.org

Eager Economy Building Micro-Museum. (Lower level) offers a glimpse of Evansville’s agriculture history. The historic building is home to two towering examples of restored Baker-Monitor windmills. 7 E Main St, Evansville.

Evansville Underground Music (EUM). A volunteer (non-profit) collective that hosts year round community concerts on front porches, backyards, indoor venues, and other places if interest. evansvilleundergroundmusic.org/

Farmers’ Market. Sundays, June–August. 11am–2pm. Enjoy local food, crafts, and other handmade treasures at Evansville’s own Just Beyond The Willow Coffeeshop. See Facebook page for official start date as event nears. Just Beyond The Willow, 510 S Madison St, Evansville. 882-4039, beyondwillow@gmail.com, facebook.com/marketatthewillow

Genealogy Group. Sponsored by the Evansville Grove Society meets on the third Thursday of each month at Creekside Place, 102 Maple Street, Evansville, WI year round. We welcome new members who are beginning, intermediate or accomplished researchers. Bring your questions, suggestions and answers to the meeting. For further information on the group, email grovesociety1@gmail.com.

Grove Society Local History Museum. Open 1–4pm on Saturdays, June–September. Exhibits feature Evansville history, housed in the historic Baker Manufacturing Office Building, 15 Antes Dr. On the museum grounds is the last tourist cabin from Lake Leota Park, restored to its 1936 appearance. For details: facebook.com/evansvillegrovesociety, grovesociety.org

Historic District Walking Tour. Four historic districts include the second oldest nationally designated district in the state. Self-guided walking tours. Follow maps in the free Walker’s Guide tour book. Copies are available at Creekside Place, City Hall, Chamber, Eager Free Public Library, and the local History Museum.

Residential Barn Quilt Tour. 80-plus Barn Quilts, the highest concentration of residential and community Barn Quilts in Rock County. Free brochure and map available at Creekside Place, Chamber, City Hall, and Eager Free Public Library. A link to an online version is at ci.evansville.wi.gov/experience-evansville/

Historical Attractions Highlight

Rock County is home to numerous historical attractions. These properties represent two prominent examples.

Lincoln Tallman House

440 N. Jackson St. Janesville, WI 53548

The Lincoln-Tallman House was the residence of the William Tallman family from 1857 to 1915.

In 1951, the house became a museum. Tour this historic Rock County landmark and learn about the Tallman family and life in the 19th century. A Help Wanted Tour is also available, offering a glimpse at servant life. During the holidays attend the Christmas Tree tour, where over 150 Christmas Trees are displayed, all decorated by area businesses and organizations.

This site is also available for rent and offers educational programs.



Lincoln-Tallman House



Milton House Museum

Milton House Museum

18 S Janesville St, Milton 53563

This National Historic Landmark is Wisconsin’s only certified Underground Railroad site open for tours.

Guided tours are offered if scheduled at least 48 hours in advance and last approximately 1 hour. Self-guided audio tours are also available.

Guests learn about the founding of Milton, the many purposes of the historic Milton House structure, the history of America in the tumultuous years leading up to the Civil War, the importance of the Underground Railroad in the United States, and how the Underground Railroad operated in Milton. Multiple events are hosted at the Milton House annually, including Twilight Tours, Civil War Living History Days, A Christmas Carol, and more.

2025 Calendar of Events

Event dates, times, and details subject to change. Please visit websites or socials for the most up to date information.

January

3-4, 24-25 Janesville Jets Hockey Janesville Ice Arena, 821 Beloit Ave (608) 752-5387, janesvillejets.com

3 Candlelight Hike at Janesville School Outdoor Lab. 6-8pm. Hosted by Janesville School District & Ice Age Trail Alliance / Rock County Chapter. 3570 County Rd A, Janesville. iceagetrail.org

3-4 Comedian Chastity Washington. Comedy Cabin, 120 N Crosby Ave, Janesville. cabinlaughs.com

4 Comedy on Main Janesville Performing Arts Center, 408 S Main St, (608) 758-0297. janesvillepac.org

9 Country Artist Dan Lepien. Janesville Performing Arts Center, 408 S Main St, (608) 758-0297, janesvillepac.org

9 Light in the Darkness Art Show Opening Reception Janesville Performing Arts Center, 408 S Main St, Janesville. janesvilleartleague.org

10-11 The American Cornhole (ACO) Beloit Major is coming back to Beloit Over 100 cornhole players from more than 10 states will compete in this exciting tournament at the Eclipse Event Center, Beloit.

10 Dueling Pianos with Piano Fondue Janesville Performing Arts Center, 408 S Main St, Janesville. (608) 758-0297. janesvillepac.org

10-11 Comedian Sean. Comedy Cabin, 120 N Crosby Ave, Janesville. cabinlaughs.com

11 Candlelight Hike at Storrs Lake Wildlife Area. 6-8pm. Hosted by Ice Age Trail Alliance / Rock County Chapter. E Storrs Lake Rd, Milton. iceagetrail.org

12 Show Me Reptile Show & Pet Expo. Holiday Inn Express / Janesville Conference Center. 3100 Wellington Pl, Janesville. showmereptileshow.com

14-17 Janesville Restaurant Week. Throughout Downtown. janesvilleresaurantweek.com

16 Comedian Elijah Holbrook. Comedy Cabin, 120 N Crosby Ave, Janesville, cabinlaughs.com

17-18 Comedian Greg Fitzsimmons. Comedy Cabin, 120 N Crosby Ave, Janesville, cabinlaughs.com

17-19 Uptown Mega Markets. Vendors and crafters, Uptown Janesville Mall, 2500 Milton Ave, Janesville (608) 434-2709

17 Winter Fun at the VFW. Janesville VFW, 1015 Center Ave, Janesville. vfw1621.org

18 Take3. The refinement of a rigorous classical music background with rock-star charisma. Edgerton Performing Arts Center. 200 Elm High Dr, Edgerton (608) 561-6093. edgertonpac.com

18 MLK Commemoration. Blackhawk Technical College, 6004 S County Rd G, Janesville. (608) 752-5445. ywcarockcounty.org

24 Beach Party at Northleaf Winery. Bahama Bob live. 232 S Janesville St, Milton. northleafwinery.com

24, 25, 26, 31, Feb 1-2 Godspell. Janesville Performing Arts Center, 408 S Main St, (608) 758-0297. janesvillepac.org

24-25 Evansville Jays 19th Annual Strike Out for Baseball Bowling Fundraiser. \$20 entry fee. Open to all. Proceeds support local amateur baseball. Blue Devil Bowl, 108 E Main St, Evansville. (608) 575-4359. facebook.com/evansvillejays

24-26 Beloit Winterfest. Indoor & outdoor festivities. beloitrecreation.com/beloit-winterfest

February

6 Forward Janesville's Rock Regional Business Expo. Holiday Inn Express/Janesville Conference Center, 3100 Wellington Pl, Janesville. (608) 757-3160. forwardjanesville.com

6-8 Winter Used Book Sale and Donation Days. Grange Mall, 19 W Main St, Evansville. (608) 882-2260. facebook.com/friendsofEFPL

7-8 7th Annual 8 Pin Bowling Tap Tournament Chamber. Event open to everyone. Blue Devil Bowl, 108 E Main St, Evansville. (608) 882-5131. facebook.com/evansvillecoc

8 Candlelight Hike. Hosted by Friends of Rockport Park 6-8pm at Rockport Park 2801 Rockport Rd, Janesville.

8 Chocolate Extravaganza. Creekside Place, 102 Maple St, Evansville. creeksideplace.org

8 Janesville Stamp Club Exhibition & Bourse. Holiday Inn Express/Janesville Conference Center, 3100 Wellington Pl, Janesville (608) 756-9661. wfscstamps.org

12-16 Wine and Chocolate Obsession. Guided wine and chocolate pairings, Northleaf Winery, 232 S Janesville St, Milton. (608) 580-0575. northleafwinery.com

14-15, 21-22 Janesville Jets Hockey. Janesville Ice Arena, 821 Beloit Ave, Janesville. (608) 752-5387. janesvillejets.com

14-16 Uptown Mega Markets. Vendors and crafters, Uptown Janesville Mall, 2500 Milton Ave, Janesville. (608) 434-2709.

21-23 Harriet the Spy JPAC Kids. Janesville Performing Arts Center, 408 S Main St, (608) 758-0297. janesvillepac.org

22 Candlelight Hike at Rock River Heritage Park 5801 N River Rd, Janesville. iceagetrail.org

22 Maple Sugar Fest. 8am-12pm. Welty Environmental Center. 1201 Big Hill Ct, Beloit. weltycenter.org

22 Flannelfest Craft Beer Experience. Sample 100+ beer varieties from craft and home brewers. Janesville Town Square, 15 Dodge St, Janesville (608) 728-3322. janesvilleflannelfest.com

March

1 Spring Fling Vendor Expo. Rock County Fairgrounds, 1301 Craig Ave, Janesville.

1 Steadily Improving Janesville Performing Arts Center. 408 S Main St, Janesville. (608) 758-0297. janesvillepac.org

2 33rd Annual FFA Farm Toy Show. 9am-2pm. Car, truck and farm displays, tractors, and more. Evansville School District Field House, 320 Fair St, Evansville. facebook.com/evansville.wi.ffa.alumni

7-8 Vintage Shop Hop Vintage. Handmade, and repurposed treasures at Evansville Main St proprietors. facebook.com/vintageshop

7-8, 14-15 Janesville Jets Hockey. Janesville Ice Arena, 821 Beloit Ave, (608) 752-5387. janesvillejets.com

14-16 Uptown Mega Markets. Vendors and crafters, Uptown Janesville Mall, 2500 Milton Ave. (608) 434-2709

14 St Patrick's Day Party. Northleaf Winery, 232 S Janesville St, Milton, (608) 580-0575. northleafwinery.com

15 How Sweet It Is: A Tribute to James Taylor. Edgerton Performing Arts Center, 200 Elm High Dr, Edgerton (608) 561-6093. edgertonpac.com

15 Lip Sync Battle 2024. Benefits Project 16:49, supporting homeless and at-risk youth in the community, Janesville Performing Arts Center, 408 S Main St, Janesville. (608) 314-5501. project1649.org

15 Second Hand News. Veteran Chicago musicians perform Fleetwood Mac's music with spot-on vocal harmonies, Janesville Performing Arts Center, 408 S Main St, (608) 758-0297. janesvillepac.org

15 Shamrock Shuffle Run/Walk O'Riley & Conway's Irish Pub. 214 W Milwaukee St, Janesville. (608) 755-0575

23 Future Impressions Concert. Beloit Janesville Symphony Orchestra. Blackhawk Technical College. 6004 S County Hwy G, Janesville. (608) 757-7773. beloitjanesvillesymphony.org

28-Apr 6 Beloit International Film Festival (BIFF). Downtown venues. Times vary. 608-313-1200. beloitfilmfest.org

April

5 ECHO Easter Event. Easter Bunny and egg hunt, Uptown Janesville, 2500 Milton Ave, Janesville. echojanesville.org

11-12 Janesville Jets Hockey. Janesville Ice Arena, 821 Beloit Ave, Janesville. (608) 752-5387, janesvillejets.com

11-13 Matilda the Musical. High School Performing Arts Center, 640 S Fifth St, Evansville. evhspace.ludus.com

12-13 Bugz JPAC Kids. Janesville Performing Arts Center, 408 S Main St. (608) 758-0297. janesvillepac.org

18-20 Uptown Mega Markets Vendors and crafters, Uptown Janesville Mall, 2500 Milton Ave, (608) 434-2709.

19 Downtown Easter Eggstravaganza at Beloit Farmers' Market. 557 E Grand Ave, Beloit. downtownbeloit.com

25-27 Seussical Jr by JPAC Kids. Janesville Performing Arts Center, 408 S Main St, (608) 758-0297. janesvillepac.org

26 Comedy on Main. Janesville Performing Arts Center. 408 S Main St, Janesville. (608) 758-0297, janesvillepac.org

26 Spring Wine Walk. Sip, stroll, shop in downtown Beloit. downtownbeloit.com

27 Run the Rock Marathon. Half-Marathon & 5K Janesville Town Square, 69 S River St, Janesville.

May

2 Foreign Nights: A Tribute to Foreigner and Night Ranger. Edgerton Performing Arts Center. 200 Elm High Dr, Edgerton (608) 561-6093. edgertonpac.com

3 Orfordville Rummage Sale Day. Village wide rummage sales. 4

2025 Calendar of Events

Event dates, times, and details subject to change. Please visit websites or socials for the most up to date information.

May Continued...

- 3 Beckman Mill County Park Opening Day Celebration.** 12-4pm. Friends of Beckman Mill. beckmanmill.org
- 3-31 Roll On: The Music of Alabama.** Edgerton Performing Arts Center. 200 Elm High Dr, Edgerton. (608) 561-6093. edgertonpac.com
- 9 Art Crawl.** Evansville Main Street shops host up to 30 artists. facebook.com/evansvilleartcrawl
- 10 Art In Bloom Fundraiser.** Art collection paired with floral arrangements, Janesville Woman's Club. 108 S Jackson St, Janesville. (608) 754-4544
- 15 Show Me Reptile Show & Pet Expo.** Holiday Inn Express/Janesville Conference Center. 3100 Wellington Pl, showmereptileshow.com
- 16 Scramble for Youth Golf Outing.** Glen Erin Golf Club. 1417 W Airport Rd, Janesville. (608) 755-0575. bgcjanesville.org
- 16-18 Team World Horseshoes Tournament in Beloit.** visitbeloit.com/calendar
- 17 Downtown Wine Walk.** Downtown Janesville, 69 S River St. (608) 728-3322. janesvillewinewalk.com
- 17 Friends of Rock County Parks Annual Bike Ride.** Starting and ending at Gibbs Lake County Park. 7am-2pm. rocktrailcoalition.org
- 17-18 Civil War Living History Days.** Mingle with Civil War era reenactors, see artillery, infantry and medical demonstrations, and rub elbows with President Abraham Lincoln, Milton House Museum grounds, 18 S Janesville St, Milton. (608) 868-7772. miltonhouse.org
- 23 Wine and Garden Party.** Northleaf Winery, 232 S Janesville St, Milton, (608) 580-0575. northleafwinery.com
- 24 Steadily Improv'ing.** Janesville Performing Arts Center. 408 S Main St, (608) 758-0297. janesvillepac.org

- 25 Orfordville Market Day.** 9am-1pm across from Village Hall at 303 E Beloit St, Orfordville. facebook.com/orfordvillemarketdays
- 26 Memorial Day Recognition Parade and Rally in the Alley,** 179 E Main St, Evansville.
- 26 Memorial Day Parade.** Beloit / South Beloit parade organized by the United Veteran's Memorial Day Parade Committee. visitbeloit.com/calendar
- 26 Memorial Day Parade & Ceremony.** Downtown Janesville, Main St & Milwaukee St.

June

- 1 Rock County Get Together.** Family event with cultural games, activities and stage performances from Diversity Action Team of Rock County. Janesville Performing Arts Center, 408 S Main St, Janesville. datrockco.org
- 6-8 June Days in Orfordville.** facebook.com/orfordvillecommunityjunedays

- 7 Evansville Grove Society Museum Season Opening.** 1-4pm Saturdays, June-September. 15 Antes Dr, Evansville. facebook.com/evansvillegrovesociety
- 8 Clinton County Market.** 9am-3pm at the corner of Front and Allyn St in Clinton. facebook.com/clintoncountrymarket
- 13 10th Annual Strawberry Shortcake Festival.** 3-7pm, Emma's Table. 104 W Main St, Evansville.
- 14 Janesville Morning Rotary's 25th Annual Pie Ride.** Bicycling event with a family fun route plus 20K, 50K and 100K routes through scenic Southern Wisconsin and a delicious pie at the finish line. Janesville Town Square, 65 S River St, Janesville. pieride.org
- 19 Janesville Town Square Gran Prix.** Opening date of the Tour of America's Dairyland Series. Eleven days of exciting bicycle criterium racing, plus food trucks, live music, and fun kids activities. Downtown Janesville. (608) 757-3171. janesvilletownsquaregranprix.com
- 20-21 A Barnyard Moosical.** JPAC Kids. Janesville Performing Arts Center, 408 S Main St, (608) 758-0297. janesvillepac.org
- 21 Orfordville Market Day.** 9am-1pm across from Village Hall at 303 E Beloit St, Orfordville. facebook.com/orfordvillemarketdays
- 21 Comedy on Main.** Janesville Performing Arts Center, 408 S Main St, Janesville. (608) 758-0297. janesvillepac.org
- 21 Juneteenth Celebrations.** visitbeloit.com/calendar
- 21 Mercury Open Water Ski Show Tournament.** Traxler Park, 600 N Main St, Janesville. rockaquajays.com
- 25 Culpepper & Merriweather Circus** at Clinton Jr/Sr Highschool. 112 Milwaukee Rd in Clinton. 5pm and 7:30pm. clintonactivities.com
- 27 Ice Cream Social.** Sponsored by the Friends of the Eager Free Public Library. Time TBD. Emma's Table, 104 W Main St, Evansville. (608) 882-2260. facebook.com/friendsofEFPL, friendsefpl@gmail.com
- 28 Star Spangled Saturday.** Rock Aqua Jays Water Ski Show plus food vendors, kids' games, pontoon rides, live music, and fantastic fireworks at dusk sponsored by Festival Foods. Traxler Park, 600 N Main St, Janesville. rockaquajays.com

July

- 4 4th of July Concert and Fireworks in Beloit.** visitbeloit.com/calendar
- 4 Evansville 4th of July Fun Run/Walk.** 7:30am Leonard-Leota Park. 10K/5K/1Mile run-walk. Benefits Breakthrough T1D, Aware Agency and the Evansville Soccer Club. facebook.com/evansville-4th-of-july-run-walk
- 2-6 Milton 4th of July Celebration.** Rhythm & Booms Live music, a softball tournament, car show, parade, and the Rhythm & Booms Fireworks Show. Schillberg Park, 301 W High St. milton4thofjuly.com
- 4-6 A Lake Leota Fourth.** Live music, local food, and more. Day of the Fourth includes 10am parade and fireworks at dusk. Saturday includes a youth fishing tournament at 8am and fireworks at dusk. Rumble in the Park Car Show on Sunday. facebook.com/alakeleota4th/
- 13 Show Me Reptile Show & Pet Expo.** Holiday Inn Express/Janesville Conference Center, 3100 Wellington Pl. showmereptileshow.com
- 17-20 JPAC's Outdoor Shakespeare: Macbeth.** Rock County Historical Society, Lincoln Tallman House, 426 N Jackson St, Janesville. (608) 758-0297. janesvillepac.org

- 18-20 Tobacco Heritage Days.** Live music, a car and truck show, the Rascal Run 5k, and activities for the whole family. Downtown & Racetrack Park, Edgerton. edgertontobaccodays.com
- 18-19 Pistons & Props Air & Car Show.** Aircraft rides, activities, live music, vendors, and food. Southern Wisconsin Regional Airport, 4004 S Oakhill Ave, Janesville. pistonsprops.com
- 19 Edgerton Pottery Festival.** Racetrack Park. 900 Stoughton Rd, Edgerton. artscouncilledgerton.com
- 19 Tobacco Days Car & Truck Show.** Downtown Edgerton. tobaccodayscarandtruckshow.com
- 19 Stroll Through Arts in the Park.** Albion Park, 612 Campus Ln, Edgerton
- 17 Downtown Duck Dump.** Plastic duck race fundraiser with big prizes. Janesville Town Square, 15 Dodge St, Janesville. downtownjanesville.com
- 20 Friends of Beckman Mill Park Ice Cream Social.** 12-4pm. 11600 S Cty Rd H, Beloit. beckmanmill.org
- 22-27 Rock County 4-H Fair.** Rock County Fairgrounds, 1301 Craig Ave, Janesville, (608) 755-1470, rockcounty4hfair.com
- 31- Aug 2 Summer Used Book Sale and Donation Days.** Grange Mall (lower level), 19 W Main St, Evansville. Sponsored by the Friends of the Eager Free Public Library. 882-2260, facebook.com/friendsofEFPL, friendsefpl@gmail.com

August

- TBD Evansville Night Out.** Larson Acres Park, 700 Porter Rd, Evansville. Free food and pool party. In partnership with the Evansville Police Department. buildingasaferevansville.org/
- TBD MACC Pork Roast & Milton Makers Market.** North Goodrich Park, 20 Parkview Dr, Milton. visitmilton.com
- 1 Downtown Beloit Street Dance.** Live music. 530-11pm. downtownbeloit.com
- 1-2 Evansville's Citywide Garage Sale Days.**
- 2-3 Tallman Arts Festival.** Rock County Historical Society. 440 N Jackson St, Janesville. (608) 756-4509. rchs.us
- 3 Clinton Country Market.** 9am-3pm at the corner of Front and Allyn St in Clinton. facebook.com/clintoncountrymarket
- 8-10 National Water Ski Show Tournament.** Traxler Park. 600 N Main St, Janesville. rockaquajays.com



Kim Hoholek Photography

2025 Calendar of Events

Event dates, times, and details subject to change. Please visit websites or socials for the most up to date information.

August Continued...

9 US Kubb Open. Pohlman Field. 2301 Skyline Drive, Beloit. Registration begins at 8am. visitbeloit.com/kubb/

14-17 Freaky Friday. JPAC Kids. Janesville Performing Arts Center. 408 S Main St, Janesville. (608) 758-0297 janesvillepac.org

14 Night on Festival. Live music and food trucks. Janesville Town Square. 15 Dodge St, Janesville. (608) 728-3322. downtownjanesville.com

16 Beloit Dirty Dash. Ages 4-18. beloitrecreation.com/dirty-dash/

22 ECHO Mini Golf Championship. Traxler Park. 600 N Main St, Janesville. echojanesville.org

29-31 Rock River Thresheree. Living history festival features working antique steam engines and equipment demonstrations. Thresherman's Park. 51 E Cox Rd, Edgerton. (608) 868-2814. thresheree.com

30 Orfordville Market Day. 9am-1pm. 721 Genesis Dr, Orfordville. facebook.com/orfordvillemarketdays

September

5-6 Chilimania & Country Edge Concert. Wisconsin State Championship CASI-Sanctioned Chili Cook-Off. A Traditional Chili Cooking Contest, and live music. Downtown Edgerton. 99 N Henry St, Edgerton. (608) 561-7566. chilimania.com

5-7 Art Infusion Murals. Sidewalk chalk art competition. Downtown Janesville. (608) 757-3171

6-7 Thunder on the Rock Boat Racing. 11am-5pm. Stock outboard, modified outboard, junior classes, and more. marineracingclub.com

7 Heritage Sunday at Beckman Mill. 11am-4pm. beckmanmill.org

6 Downtown Sidewalk Sale Downtown Janesville. downtownjanesville.com

13 Rock River Valley Carvers of WI. Show & Sale Rock County Fair Grounds. 1301 Craig Ave, Janesville. (608) 931-0188 rockrivervalleycarvers.com

13 Airing of the Quilts. Hosted by the Sassy Farm Chicks in Orfordville. This event takes over the downtown and Purdy Park area with quilts, quilting demonstrations, vendors, and more. sassyfarmchicks.com

TBD Ladies Night Out. Admission fee. Swag bag, refreshments, entertainment, prizes, and specials at Main St businesses. (608) 882-5131, facebook.com/evansvillecoc, facebook.com/lnoevansville

20 Twilight Tours & Tastings at the Milton House Museum. Experience the Milton House by candlelight then enjoy a wine and chocolate pairing provided by Northleaf Winery. Milton House Museum. 18 S Janesville St, Milton. (608) 868-7772. miltonhouse.org

21 Beloit Autorama. Preservation Park. 3444 S Riverside Dr, Beloit. beloitautorama.com

27 Downtown Wine Walk. Downtown Janesville, 69 S River St, Janesville. (608) 728-3322, janesvillewinewalk.com

28 Clinton Country Market. 9am-3pm at the corner of Front and Allyn St in Clinton. facebook.com/clintoncountrymarket

October

TBD. Pumpkin Fest. The Gathering Place, 715 Campus St, Milton. tgpimilton.com

3-4 Vintage Shop Hop. Vintage, handmade and repurposed treasures at Evansville Main St proprietors. vintageshophop.blogspot.com, facebook.com/vintageshophop

4 Fall in Fall Event. Rock River Heritage Park. 5801 N River Rd, Janesville. 11am-2pm.

4 Burntess Chevrolet Anniversary Party and Car Show. Burntess Chevrolet. 802 Genesis Dr, Orfordville. burntesschevy.com

4 House of Mercy Charity Ball. Celtic House - Glen Erin Golf Club. 1417 W Airport Rd, Janesville. (608) 741-2422

5 Fall Fest at Carver-Roehl Park. 4907 S Carvers Rock Rd, Clinton. 1130am-230pm. facebook.com/rockcountyparks/

9-12, 17-19 AAUW Used Book Sale Olde Towne Mall. 20 S Main St, Janesville. (608) 290-1911 or (608) 754-4544. aauw-janesville.net

11 Orfordville Fall Fest. Hosted at the Orfordville Fire Station, featuring a chili cook off, scarecrow contest, and more. orfordville.org

11 Fall Wine Walk. Downtown Beloit. 2-6pm. Tickets available for purchase. downtownbeloit.com

18 Race for Agrace. 5K or 1-mile run/walk. Palmer Park, 2501 Palmer Dr, Janesville. agrace.org

22 Taste of Chamber. 5-8pm. Eclipse Center. 3 Eclipse Blvd, Beloit. greaterbeloitchamber.org

24-26 Halloweekend. Downtown Janesville. downtownjanesville.com

25 Merchant Trick or Treat. Local businesses open their doors to hand out candy. Scavenger hunt. Downtown Evansville. evansvillechamber@gmail.com, evansvillechamber.org

25 Downtown Beloit Halloween Costume Parade and Party. Live music, entertainment, and activities. downtownbeloit.com

26 Fall-O-Ween. Clinton Area Chamber of Commerce. Candy, games, fundraisers hosted by local businesses and groups. clintonwichamber.com

31 HalloWine Costume Party. Northleaf Winery. 232 S Janesville St, Milton. (608) 580-0575 northleafwinery.com

November

1 Fall Festival Vendor Expo. Rock County Fairgrounds. 1301 Craig Ave, Janesville.

9 Show Me Reptile Show & Pet Expo. Holiday Inn Express/Janesville Conference Center. 3100 Wellington Pl, Janesville. showmereptileshow.com

15 Orfordville Market Day. 9am-1pm across from Village Hall at 408 w Beloit St, Orfordville. facebook.com/orfordvillemarketdays

21 - 22 Olde Fashioned Christmas. Free family event. Santa arrives on fire truck, carriage rides, movie, ornament and cookie decorating, shopping, decorated storefronts. Downtown Evansville. (608) 882-5131, facebook.com/oldefashionedchristmas

21-22 Shop the Rock. Great deals and dining, Downtown Janesville. (608) 208-2055. downtownjanesville.com

22 Annual Holiday Bazaar. 9am-2pm. St John's Lutheran Church, 312 S Third St, Evansville. office@stjohns-lc.org

26 Thanksgiving Pie Sale 11am-3pm. Eager Free Public Library, 39 W Main St, Evansville. Sponsored by the Friends of the Eager Free Public Library. (608) 882-2260. facebook.com/friendsofEFPL friendsefpl@gmail.com

26 Love Light Tree Lighting Ceremony. 5pm at the Grange Mall, 19 W Main St, Evansville. (608) 882-9900. aware@community-action.org facebook.com/awareevansville/

27 Festival Foods Turkey Trot. 5-mile run, 2-mile fun run, or an 2-mile walk, 2-mile Dog Jog, Boys & Girls Club/YMCA. 200 W Court St, Janesville. festivalfoodsturkeytrot.com

28 Grand Lighted Holiday Parade & Tree Lighting. 5-8pm. Downtown Beloit. downtownbeloit.com

29 Small Business Saturday. Small businesses in all communities hosting specials, events, etc.

December

4-7 Merry Milton Weekend. Kick off the holiday season with activities throughout Milton. visitmilton.com

5 Holidazzle. Downtown Beloit. Art, crafts, vendors, Satna, music, trolley rides. downtownbeloit.com

5 Winter Wonderland and Light Night. Clinton Area Chamber of Commerce. Activities, Santa, parade, light night map released. clintonwichamber.com

5-7 Janesville's Jolly Jingle. Fun family getaway weekend with activities for all ages including ice skating, a lighted parade, live theater, fireworks, a tree lighting, family entertainment, and kids activities, Downtown Janesville. (608) 755-3030. janesvillejollyjingle.com

6 41st Annual Evansville Craft Fair. \$1 admission fee, school age and up. 9am-2pm. Lunch available on site. J.C. McKenna Middle School. 307 S First St, Evansville. (608) 882-4780

7 Ecumenical Holiday Choir Concert. 5pm. Free. Congregational United Church of Christ, 112 W Church St, Evansville.

12-14 A Christmas Carol at the Milton House. Milton House Museum. 18 S Janesville St, Milton. (608) 868-7772, miltonhouse.org

19 Winesmas. Northleaf Winery. 232 S Janesville St, Milton. Christmas Carol Piano Bar, Ugly Sweater Contest, and more. 630-930pm. (608) 580-0575, northleafwinery.com

31 New Year's Eve. Northleaf Winery. 232 S Janesville St, Milton. (608) 580-0575, northleafwinery.com

Entertainment

Janesville Comedy Cabin
cabinlaughs.com

Beloit Civic Theatre
beloitcivictheatre.org

**Beloit College International
Performing Art Series**
beloit.edu

**Beloit Janesville Symphony
Orchestra**
beloitjanesvillesymphony.org

Rock River Repertory Theatre
rockriverrep.com

Janesville Jets Hockey Team
janesvillejets.com

Friends of Riverfront
friendsofriverfront.com

Henry Dorr Baker's
henrydorrbusters.com

Beloit College Athletics
beloitcollegeathletics.com

Edgerton Performing Arts Center
edgerton.k12.wi.us

Evansville Community Theatre
ecttheater.com

Janesville Performing Arts Center
janesvillepac.org

Janesville Little Theatre
janesvillelittletheatre.org

Kids, Fun and Drama (KFAD)
kfad608.com

Rock Aqua Jays Water Ski Show
rockaquajays.org

The Castle Beloit @ 501 Prospect
thecastlebeloit.com

UW Whitewater at Rock County
uww.edu/athletics

Blackhawk Tech Athletics
athletics.blackhawk.edu

Stage One, Inc
stageonewi.org

Laura Aldrich Neese Theatre
beloit.edu

Theatre Unlimited, Inc
tuijanesville.org

University Theatre
uww.edu/rock

ABC Supply Stadium
skycarp.com



ABC Supply Stadium in Beloit - Go Sky Carp!

Coming soon to Rock County in 2025 & 2026

Ho-Chunk Gaming in Beloit

The Ho-Chunk Nation is building a casino, hotel and conference center on the corner of Willowbrook and Colley roads near Interstate 39-90. This will be the second largest casino in the state and will have over 1,500 slot machines, 44 table games, a sportsbook, four restaurants, and a casino bar. The second phase of this project includes a 76,413 square foot convention center and an 18-story hotel with 312 rooms.



Rendering of Ho Chunk Gaming

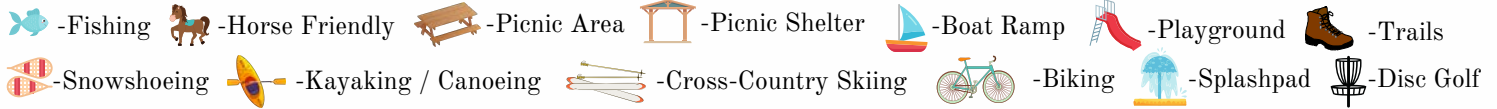
Woodman's Sports and Convention Center in Janesville

The 140,000-square-foot Woodman's Center, located at 2510 Milton Ave (Uptown Janesville), will feature a permanent ice arena for hockey, figure skating, and other on-ice sports. This center will be the home of the Janesville Jets. It will also include 25,800 square feet of conference or sports court space and a multi-use arena, which transitions seasonally between ice and dry space for events. Designed to host athletic, entertainment, business, and community events, the center will be a year-round hub for recreation and large-scale gatherings.



Rendering of Woodman's Sports and Convention Center

Rock County Parks & Trails (List includes county & city run parks)



BELOIT

- 1 Big Hill Park** 1101 Big Hill Rd
Paved & gravel walkways
- 2 Beckman Mill Park** 11450 S County Hwy H
52 acres ~ Historic features
- 3 Riverside Park** 1160 Riverside Dr
Rock River ~ 4 miles paved trails ~ Turtle Island Playground ~ Tennis courts ~ Concessions ~ Paddle boat rentals
- 4 Schollmeyer Park** 2767 E Trail Dr
1 acre ~ Access to Turtle Creek
- 5 Sugar River Park** 11317 S Nelson Rd, Brodhead, WI
7 acres ~ Sugar River access ~ Canoe launch
- 6 Summit Park** 1218 Henry Ave
Playground & Splash pad ~ Basketball court ~ Soccer field
- 7 Sweet-Allyn Park** 7149 S County Hwy J
39 acres ~ Turtle Creek ~ Softball diamond ~ Canoe launch
- 8 Vernon Park** 934 Vernon Ave
Playground ~ Splashpad ~ Football field ~ Baseball diamond

CLINTON

- 9 Carver Roehl Park** 4907 S Carvers Rock Rd
52 acres ~ 2 miles of unpaved trails ~ Limestone outcroppings
- 10 Farmers Park** Located on Mill St
Pelishak-Tiffany Nature Trail ~5.5 miles unpaved trails ~ Snowmobile trails
- 11 Lee Park** 9205 E County Hwy W
39 acres ~ Softball diamond ~ Wildlife area
- 12 Turtle Creek Parkway** 6528 S Smith Rd
4 acres ~ Turtle Creek ~ Building available for rent
- 13 Turtle Creek Access @ 140** 5501 S Hwy 140
1 acre ~ Popular kayak & canoe access spot for Turtle Creek

EDGERTON

- 14 Indianford Park** 8901 N Country Rd F
1 acre ~ Known for fishing ~ Rock River
- 15 Murwin Park** 6407 W Caledonia Rd
48 acres ~ Yahara River shoreline
- 16 Miller Farm Wetlands Conservancy**
8104 N Hwy H
59 acres undeveloped park ~ Confluence of Yahara River and Rock River

EVANSVILLE

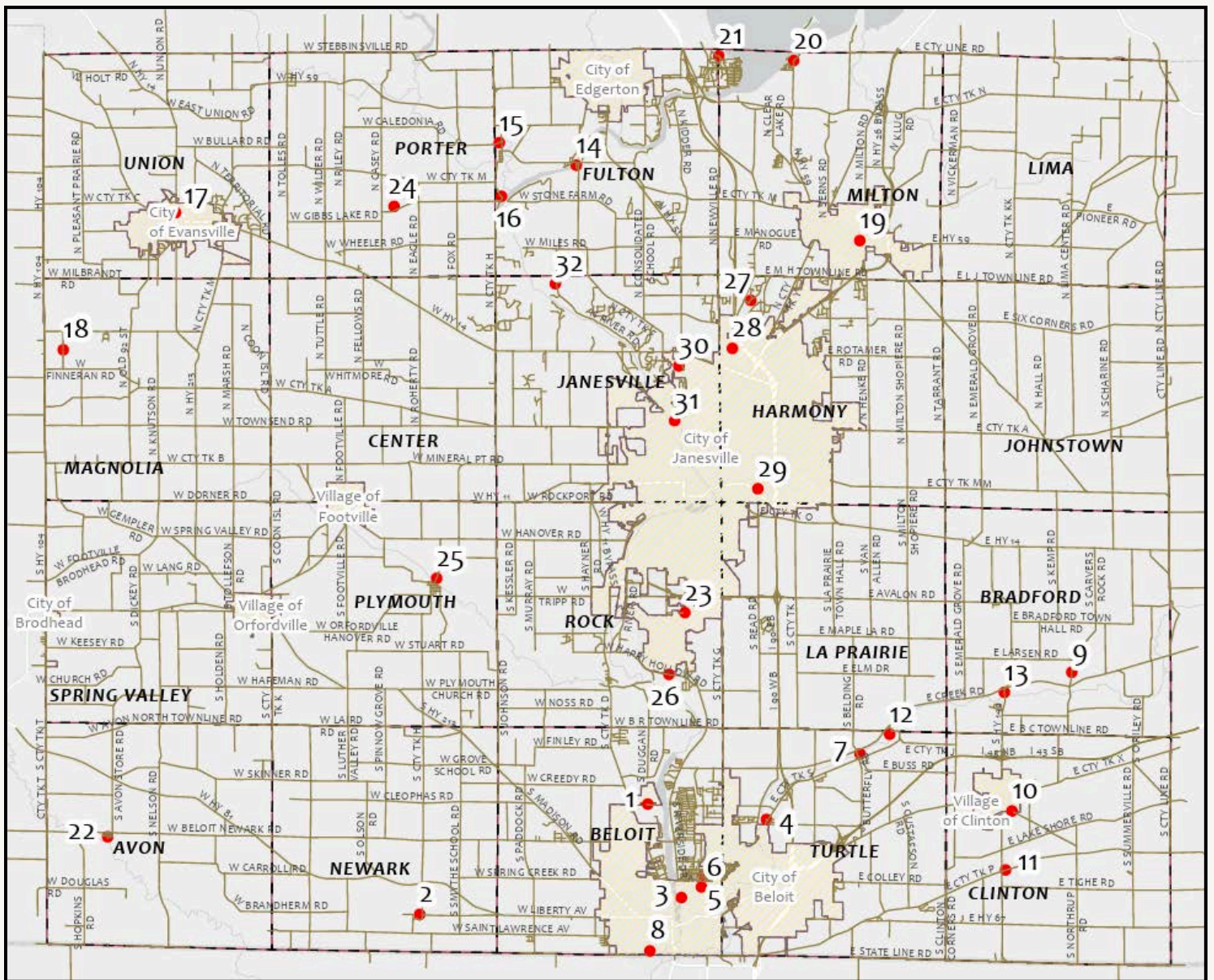
- 17 Lake Leota Park** 5 Antes Dr
Lake Leota access ~ Baseball diamond ~ Basketball & tennis courts ~ Skate park ~ Splash pad
- 18 Magnolia Bluff Park** 4002 N Croak Rd
122 acres ~ 6 miles unpaved trails
- 19 Goodrich Square Splashpad** 413 Parkview Dr
- 20 Royce Dallman Park** 11500 N Charley Bluff Rd
4 acres ~ Lake Koshkonong
- 21 Koshkonong Lake Access**
1005 E Lakeside Dr
13 acres ~ Lake Koshkonong

VILLAGE OF AVON

- 22 Avon Wildlife Area**
9731 S Main St. Brodhead, WI
6 acres undeveloped ~ Sugar River ~ Wildlife area

JANESVILLE

- 23 Airport Park** 1020 W Knilians Rd
2 acres ~ Air traffic viewing
- 24 Gibbs Lake Park** 9103 W Gibbs Lake Rd
278 acres ~ 3/4 miles of shoreline ~ Unpaved trails
- 25 Hanover Wildlife Area**
2665 S Cty Hwy H
27 undeveloped acres ~ Wildlife refuge
- 26 Happy Hollow Park** 1731 W Happy Hollow Rd
185 acres ~ Rock River ~ 4 miles unpaved trails
- 27 Ice Age Park**
5504 N Sable Dr
3.2 acres ~ undeveloped park ~ Access to Ice Age Trail
- 28 Ice Age Trail** 4101 Kennedy Rd
- 29 Palmer Park** 2501 Palmer Dr
164 acres ~ CAMDEN playground ~ Zipline ~ Wading pool ~ Restrooms
- 30 Walt Lindeman Sportsman's Park** 3411 N Hwy 51
10 acres ~ Restrooms & playground
- 31 Riverside Park** 2600 Parkside Dr
Concession stand ~ Bathrooms ~ Zipline ~ Golf course
- 32 Rock River Heritage Park** 5801 N River Rd
178 acres ~ Lake



Rock County Map

Whether you're in it for the stunning views or the family bonding, Rock County has a plethora of trails & parks for your leisure. Picnic shelters are available for reservation at many of the parks listed. For more information about any of the parks listed, please visit the host city website or the county park listing.



Amanda McElroy

Gibbs Lake



Amy Friend

Rock River Heritage Park

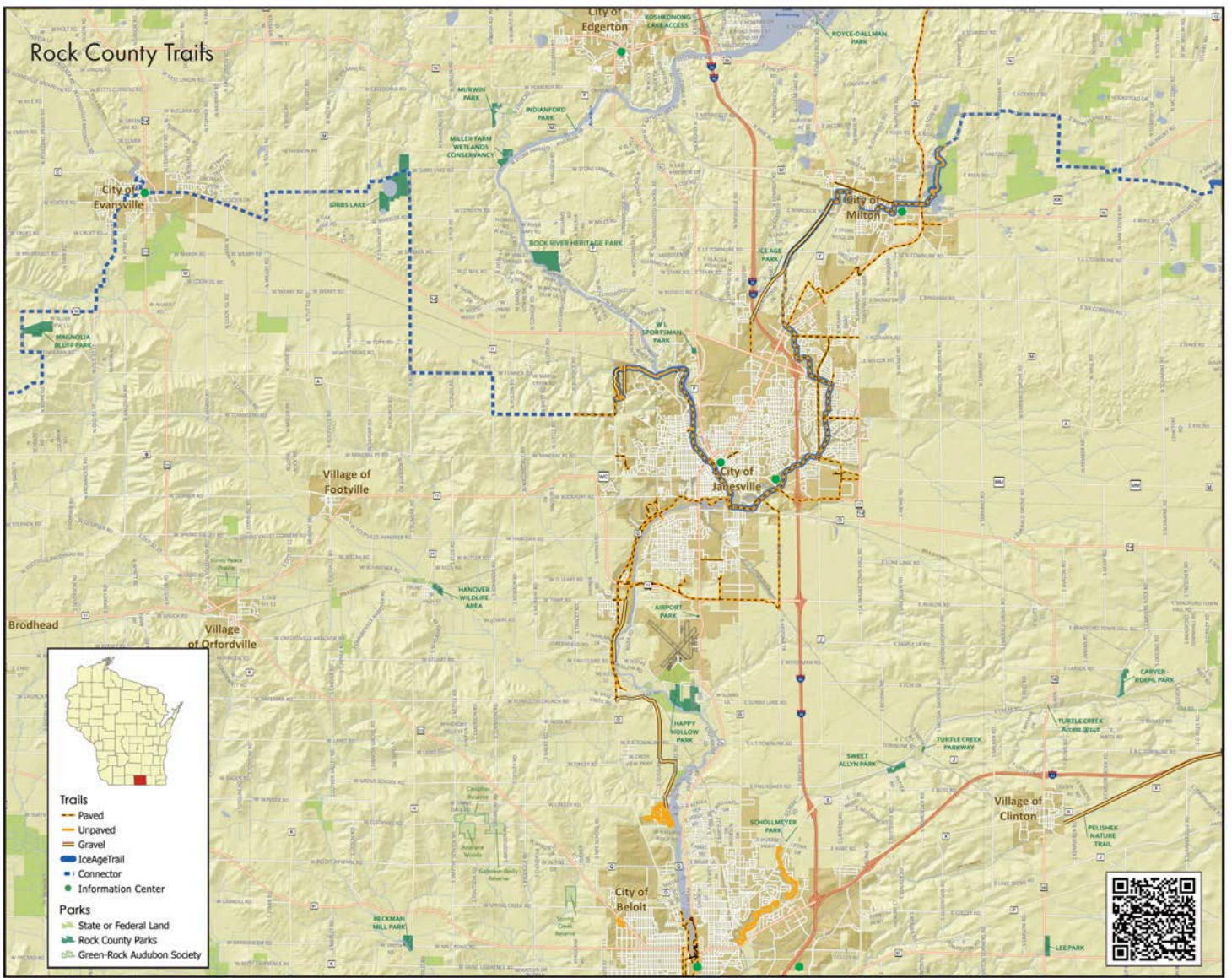


Amy Pakes

Carver Roehl Park



co.rock.wi.us/departments/public-works-parks/parks-info-maps



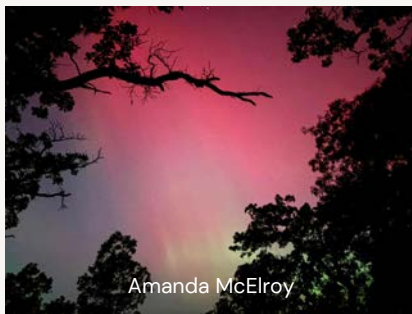
Rock County Trail Map

The Ice Age Trail is one of only 11 National Scenic Trails in the country. Experience many of Wisconsin's unique glacial features along this trail. Ideal for snowshoeing, hiking, backpacking, and more. This trail features both paved and unpaved portions.



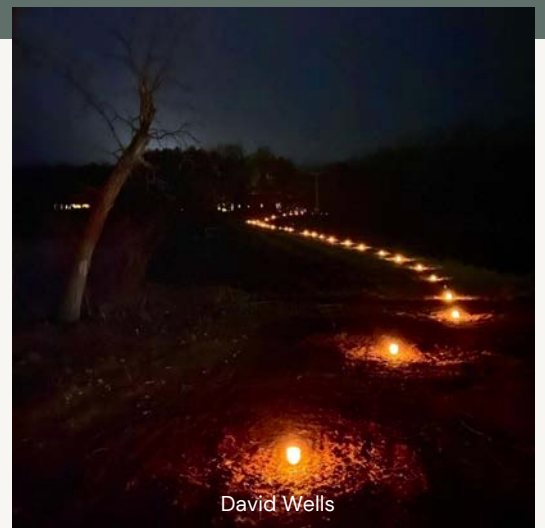
Abb's Tracks Photography

Gibbs Lake



Amanda McElroy

Magnolia Bluff Park



David Wells

Candlelight Hike

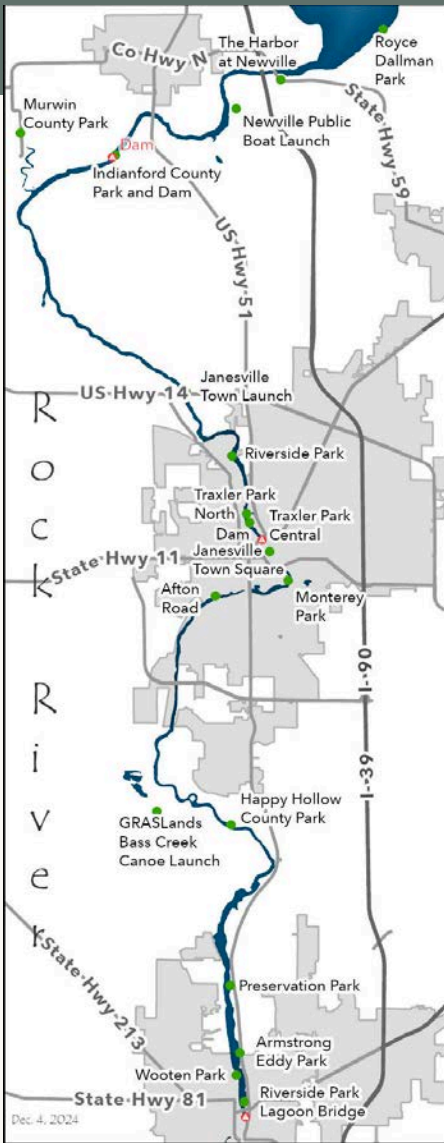
Mammoth Hike Challenge Hike 45 miles on the Ice Age Trail during October and visit three of the Trail Communities to earn a hiking certificate and a limited-edition patch. iceagetrail.org

Boat Launches & Water Access Points

Over 36 miles of the Rock River is located in Rock County. With numerous access points, the Rock River offers fishing, boating, kayaking, canoeing, and more!

Lake Koshkonong, located on the northern end of the Rock County portion of Rock River, is a 10,595-acre lake that is a destination for boating, fishing, swimming and more. During the colder months the lake is perfect for snowmobiling and ice fishing.

An ideal spot for fishing, Lake Koshkonong has musky, panfish, largemouth bass, smallmouth bass, northern pike, walleye, and catfish.



visitedgertonwi.com/lake-koshkonong/

Watercraft Rental and Sales

Anchor

718 E State Rd 59, Edgerton, WI
anchorfun.com

Floating Toy Pontoon Rentals

723 E Ellendale Rd, Edgerton, WI
floatingtoy.com

Boat Launches and Parking

Anchor

718 WI-59, Edgerton, WI

Royce-Dallman Park

11500 N Charley Buff Road, Milton, WI

Newville Public Boat Launch

10007 N Ellendale Rd, Edgerton, WI

Glen Oaks Beach

Indianford County Park

8901 N County Rd F, Edgerton, WI



Lake Koshkonong

Full Spectrum Photography

Rock County Recreation

Public Golf Courses

- Prairie Woods Golf Course - 12601 E County Rd A, Albion
- Krueger Golf Course - 1611 Hackett St, Beloit
- Creekview Par 3 - 770 Albion Rd, Edgerton
- Towne Country Club - 115 Jenson St, Edgerton
- Evansville Golf Club - 8501 N Cemetery Rd, Evansville
- Bass Creek Golf Club - 1303 S Murphy Rd, Janesville (Footville)
- Blackhawk Municipal Golf Course - 2100 Palmer Dr, Janesville
- Cecilia's Golf Course - 1901 S Emerald Grove Rd, Janesville
- Riverside Municipal Golf Course - 2100 Golf Course Rd, Janesville
- Glen Erin Golf Club - 1417 W Airport Rd, Janesville

Private Golf Courses

- Beloit Club - 2327 S Riverside Dr, Beloit
- Janesville Country Club - 2615 W County Rd A, Janesville

Aquatic Centers

- Krueger Pool - 1700 Hackett St, Beloit
- Edgerton City Pool - 312 N Main St, Edgerton
- Evansville Aquatic Center - 360 Burr W Jones Circle, Evansville
- Rockport Pool - 2801 Rockport Rd, Janesville
- Palmer Park Wading Pool- 2501 Palmer Dr, Janesville

Fall Attractions

Farmers Markets (May - Oct)

Beloit Farmers Market

Saturdays 8am-1pm
State Street & Grand Ave, Beloit
downtownbeloit.com

Janesville Farmers Market

Saturdays 8am-1pm
Main Street in downtown Janesville
janesvillefarmersmarket.com

Rock County Farmers Market

Sundays 8am-1pm
5013 W Hwy 11, Janesville
rockcountymarket.com

Meyer's Farm Market

1329 M-H Townline Rd, Milton
facebook.com/meyersfarmmarket

Skelly's Farm Market

2344 Hayner Rd, Janesville
skellysfarmmarket.com

Timber Hill Winery

8220 N John Paul Rd
timberhillwinery.com

Hawk's Orchard & Farm

9034 N Serns Rd, Milton
facebook.com/hawksorchardandfarm

Hermanson Pumpkin Patch

127 Cty Hwy N, Edgerton
hermansonpumpkinpatch.com

Fermenting Cellars

2004 W Manogue Rd, Janesville
fermentingcellarswinery.com

Northleaf Winery

232 S Janesville St, Milton
northleafwinery.com

Apple Hut

1718 Walters Rd, Beloit
facebook.com/people/The-Apple-Hut



Visit the NEW Evansville Aquatic Center!
Built in 2024, this center offers swim lessons,
slides, a rock climbing wall, and more.

Ice Arenas

- Janesville Ice Arena - 821 Beloit Ave, Janesville
- Edwards Ice Arena - 2101 Cranston Rd, Beloit

Where can I find more fun?

rockcounty.org
janesvillecvb.com
visitmilton.com
visitbeloit.com
visitedgertonwi.com
evansvillechamber.org
co.rock.wi.us/departments/public-works-parks



Photo courtesy of Visit Beloit

Apple Hut Donut

Winter Wonderland

Snowshoe Rental

Rock County Parks offers snow shoe rentals from youth, up to 100 pounds, to adults up to 250 pounds. Reservations must be made in advance during office hours (Mon thru Fri 7am-3:30pm) with the Rock County Parks Department at (608) 757-5450. Visit them online for pricing information.

facebook.com/rockcountyparks

co.rock.wi.us/departments/public-works-parks

Snowmobiling

Rock county offers a plethora of snowmobile trails maintained by local clubs. For maps, conditions, and more visit Rock County Parks - Snowmobile trails.

Snowmobile Hotline: (608) 757-5458

co.rock.wi.us/departments/public-works-parks/snowmobile-trails

Snowmobile Trails Map



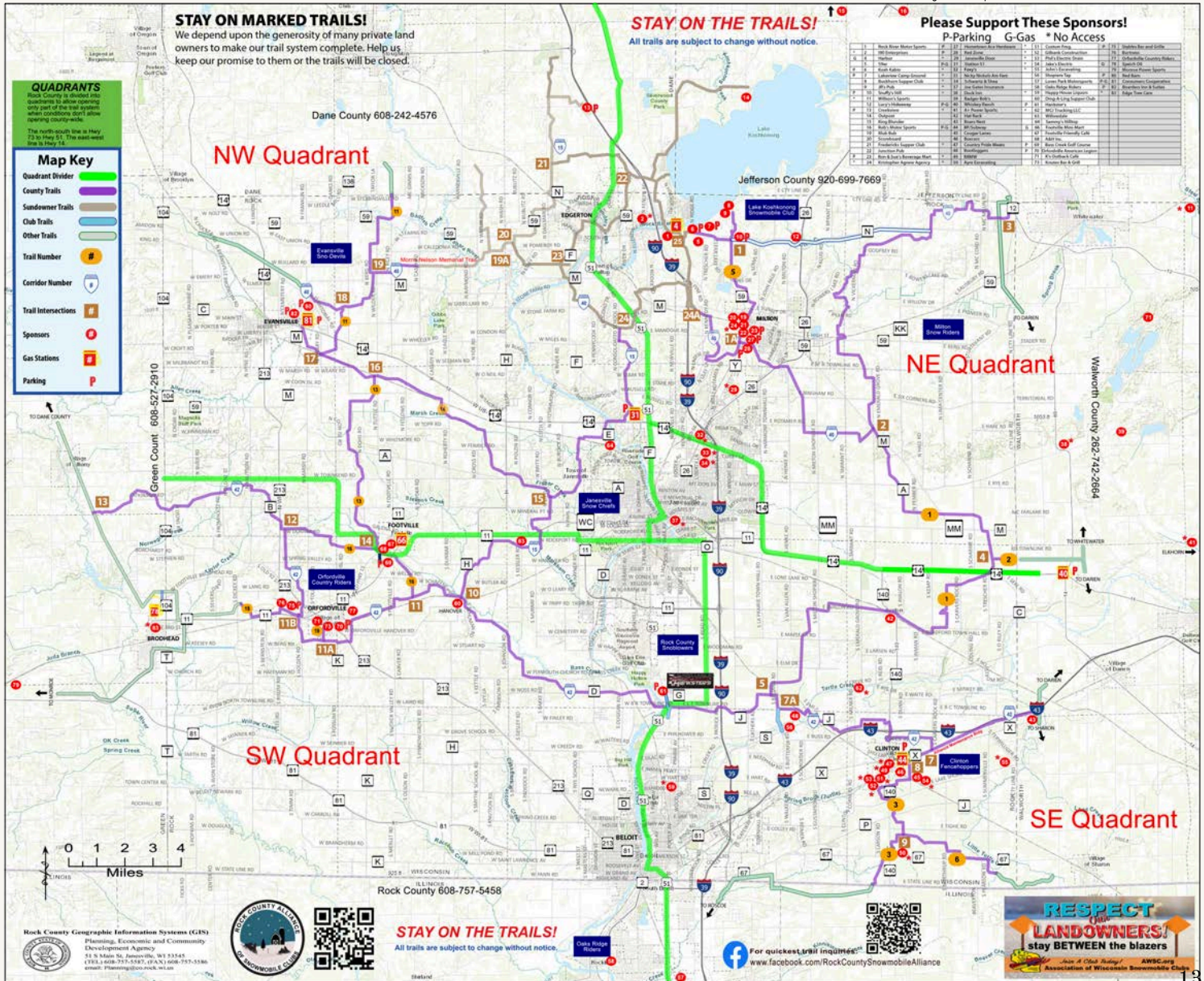
Janesville Area Convention & Visitors Bureau

Sundowners Snowmobile Club



Eric Panico Photography

Skating at Rockport Park



Cooksville

Known as “the town that time forgot” because technology bypassed the community around the beginning of the 20th century, Cooksville is a jewel of well-preserved mid-19th century Green Revival and Gothic Revival architecture. Approximately 35 buildings and historic sites comprise The Cooksville Historic District.

The Cooksville Farmhouse Inn is the perfect place to stay for family gatherings or for a comforting retreat from the hustle & bustle of city life.



Pickleball in Clinton is part of the Community Activities Program

Clinton

If hiking is your thing, come and enjoy the **Pelishke-Tiffany Nature Trail** that starts in the Village and goes east into Walworth County, or hike or cross-country ski through **Carver-Roehl County Park**, where the magnificent geological formations provide a scenic backdrop.

Visit this friendly community the first Friday in December for the **Winter Wonderland Festival**, including seasonal activities and the famous **Lighted Parade**. Visit clintonactivities.com to view the **Clinton Community Activities Program**.



Timber Hill Winery Trailer at June Days in Orfordville

Town of Beloit

Located between Beloit & Janesville, the Town of Beloit presents visitors with a healthy indulgence of rural charm. Boating and water sports have a long tradition in the Town of Beloit, as the **Rock River** provides abundant opportunity for water oriented recreation. The community's **Armstrong Eddy** and **Preservation Parks** both have boat launching facilities and ample parking for visitors who wish to enjoy the river's scenery, water sports and fishing. You can access both park locations from US Hwy 51.

Wild turkeys are often seen near the scenic **Rock River Prairie Preserve**, situated above the Rock River.



Quilt displays during Airing of the Quilts in Orfordville

Orfordville

Orfordville is the perfect destination for a peek at life in small town America, situated at the corner of Hwy 213 & Hwy 11.

The Annual **Airing of the Quilts** event that takes place throughout the downtown & Purdy Park has become a huge draw for quilt admirers & enthusiasts everywhere! Visitors from across the country come to see the long arm quilting demonstrations, Quilts of Valor presentations, quilt displays, and more. Vendors are also on site as part of **Orfordville Market Days**.

In June, the annual **Orfordville Community June Days** takes place in Purdy Park. This community event is known for its live music, and features kids activities and a variety of food trucks throughout the weekend.

Orfordville's local car dealer, **Burtness Chevrolet, Inc** hosts an extravagant anniversary party every year in October. You'll find an incredible car show, the **Rock County Dairy Trailer**, and more.

During the Christmas season bring the whole family for a drive to look at all the homes decorated for the **Christmas Decorating Contest**. Join us for the annual **Christmas Parade** that runs through the downtown and stops at Purdy Park, where Santa Claus is waiting with hot chocolate to greet everyone! Follow it up with a visit to the **Children's Christmas Benefit** at the Legion. This benefit includes a visit from Santa, raffles, dinner, and more.

For more information pertaining to events please visit our community calendar at orfordville.org/events.

2025 Events

Apr 12 Spring Fling - orfordville.org

May 3 Rummage Sale Day - Village wide rummage sales - orfordville.org

May 25 Market Day 9am-1pm - Across from 303 E Beloit St - facebook.com/orfordvillemarketdays

Jun 6-8 June Days - 100 W Church St - Live music, games, and more. facebook.com/orfordvillecommunityjunedays

Jun 21 Market Day 9am-1pm - Across from 303 E Beloit St - facebook.com/orfordvillemarketdays

Aug 14 Orfordville Block Party - facebook.com/orfordvilleblockparty

Aug 30 Market Day 9am-1pm - 721 Genesis Dr - facebook.com/orfordvillemarketdays

Sep 13 Airing of the Quilts - sassyfarmchicks.com

Sep 13 Market Day 9am-1pm - 100 W Church St - facebook.com/orfordvillemarketdays

Oct 11 The Legion Car Show - 3913 Hwy 213

Oct 11 Fall Fest - orfordville.org

Oct 17 Treats on the Trail - 303 E Beloit St - facebook.com/orfordvillelionsclub

Nov 15 Market Day 9am-1pm - 408 W Beloit St - facebook.com/orfordvillemarketdays

Dec 6 Lion's Club Holiday Parade - facebook.com/orfordvillelionsclub

Dec 6 Children's Christmas Benefit - 3913 Hwy 213



BELOIT

Where Stories Begin

Write your own Beloit story through our palpable energy, welcoming personalities, and by experiencing our unique and authentic travel adventures that can only be found here.



MEMORABLE DINING SCENE

- Three Supper Clubs
- Locally Owned Restaurants
- Cozy Cafés
- Delectable Desserts
- Breweries, Wineries, & Bars
- Upscale Dining



SEASONAL OUTDOOR ADVENTURE

- Camping & Beach
- Parks & Nature Centers
- Historical Walking Trail
- Farms & Orchards
- Recreational Sports
- Outdoor Art Trail



VIBRANT ENTERTAINMENT

- Sports
- Performing Arts
- Museums
- Theatres & Cinemas
- Galleries & Public Art
- Music & Nightlife



FLOURISHING DOWNTOWN

- Baseball Stadium
- Shopping
- Events & Festivals
- Boutique Hotels
- Ice Cream & Candy
- Farmers' Market

With its beautiful natural surroundings, cultural attractions, family-friendly accommodations, and a calendar full of events, each season brings new adventures in our charming city. Pack your bags, gather your loved ones, and head to Beloit!



ANNUAL EVENTS

WINTER

- Grand Lighted Holiday Parade
- Holidazzle
- Beloit Winterfest
- Maple Sugar Fest

SPRING

- Beloit International Film Festival
- Sky Carp Minor League Baseball (Apr-Sep)
- Spring Wine Walk
- Fridays in the Park (May-Sep)
- Beckman Mill Tours (May-Oct)
- Farmers' Market (May-Oct)

SUMMER

- Make Music Day
- Music at Harry's Place (Jun-Aug)
- Dancing at Harry's Place (Jun-Aug)
- Juneteenth Celebrations
- Pops on the Rocks
- Street Dance
- Beloit Kubb Open
- Dirty Dash

FALL

- DEVIATE
- Beloit Heritage Days
- Oktoberfest
- Beloit Autorama
- Fall Wine Walk
- Halloween Parade & Party
- Winter Crafter & Farmers' Market (Nov-Apr)
- Small Business Saturday



Scan the QR code for details on these events and more, where to eat, where to play, and where to stay!



VISITBELOIT.COM

60 Miles South of Madison
75 Miles West of Milwaukee
90 Miles West of Chicago



VISIT Edgerton

ALBION • LAKE KOSHKONONG • NEWVILLE



©Full Spectrum Photography

Festivals & Events

Take 3

Edgerton Performing Arts Center
Jan 18

How Sweet It Is

Steve Leslie Sings James Taylor
Edgerton Performing Arts Center
Mar 15

Foreign Nights – Tribute to Foreigner and Night Ranger

Edgerton Performing Arts Center
May 2

Roll On - Tribute to Alabama

Edgerton Performing Arts Center
May 3

Edgerton Night Market

Downtown
May 23, Jun 20, Jul 18, Aug 15
& Sep 19

Tired Iron Car Shows

Albion Park
2nd Wednesdays, May - Sep

Tobacco Heritage Days

Downtown & Racetrack Park
Jul 18 - 20

Edgerton Clay Day, Pottery & Art Festival

Racetrack Park
Jul 19

Rock River Thresheree

Thresherman's Park
Aug 29 - Sep 1

Chilimania & Country Edge

Downtown
Sep 5 & 6

Outdoors

Embrace Edgerton's outdoor life with plenty of water recreation and natural amenities. It's home to the 10,500-acre Lake Koshkonong, the ideal place to float along on a pontoon boat, take part in water sports, or fish for musky, walleye or bass. Take in plenty of natural beauty while kayaking the Yahara River with lush views and plenty of wildlife sightings. During the winter, find adventure on the snowmobile trails or ice fishing. Edgerton is home to a variety of campgrounds.

Special Events



©Kim Hoholek

Tobacco Heritage Days



©Full Spectrum Photography

Chilimania



©Kim Hoholek

Car Shows

History



©Full Spectrum Photography

Visit the childhood home of Sterling North, an Edgerton native who lived from 1906 to 1974. North wrote such classics as *So Dear to My Heart*, *The Wolfing*, and beloved children's book *Rascal*, an autobiographical story about raising a raccoon in the Edgerton area in the early 1900s. Visit Sundays, May - October or by appointment.

Golf

Edgerton is home to a variety of public golf options from a quick par 3 to a more challenging 27-hole regulation course at a resort complete with dining and overnight accommodations.



©Full Spectrum Photography



Evansville

Shop, bike, fish, stroll around. So much variety in and around Evansville!

2025 Events

- February 8** Chocolate Extravaganza | Creekside Place
- March 2** FFA Farm Toy Show | School District Field House
- March 7 - 8** Vintage Shop Hop | Citywide
- April 11 - 13** Matilda the Musical | High School Performing Arts Center
- May 1** Creekside Cruise Night | Creekside Place
- May 9** Art Crawl | Downtown Evansville
- May 26** Memorial Day Recognition & Rally in the Alley | VFW
- June 5** Creekside Cruise Night | Creekside Place
- June 7** Grove Society Museum Opening | Leonard-Leota Park
- June 13** Strawberry Shortcake Festival | Emma's Table
- June 27** Ice Cream Social | Emma's Table
- July 3** Creekside Cruise Night | Creekside Place
- July 4** 5K/10K/1 Mile Fun Run/Walk | Leonard-Leota Park
- July 4-7** A Lake Leota Fourth | Leonard-Leota Park
- August TBD** Evansville Night Out | Larson Acres Park
- August 1 - 2** Citywide Garage Sales
- August 7** Creekside Cruise Night | Creekside Place
- August 24** History in the Park | Leonard-Leota Park
- September 4** Creekside Cruise Night | Creekside Place
- September TBD** Ladies Night Out | Downtown Evansville
- October 3-4** Vintage Shop Hop | Citywide
- October 25** Prescription Drug Takeback Day | Evansville Police Department
- October 25** Merchant Trick or Treat | Downtown
- November 21 - 22** Olde Fashioned Christmas | Downtown Evansville
- November 22** Holiday Bazaar | St John's Lutheran Church
- November 29** Small Business Saturday | Citywide
- December 6** Craft Fair | J.C. McKenna Middle School
- December 7** Ecumenical Holiday Choir Concert | Congregational United Church of Christ

Enjoy a picnic lunch or bring your kayak to the lake in beautiful Leonard-Leota Park. Roam rustic roads and follow a guided map that showcases the unique charm of urban and rural barn quilt folk art.

Settled in 1839, Evansville has “the finest collection of 1840s to 1915 architecture of any small town in Wisconsin,” according to the Wisconsin Historical Society. More than 300 residential and commercial properties are listed on the National Register of Historic Places. A free map shows dozens of grand architectural styles in a highly walkable area. The map is part of the free Walker’s Guide tour book available at many downtown locations, or by writing to EvansvilleChamber@gmail.com.

Strolling through the neighborhoods, you might occasionally encounter live music concerts on porches, courtesy of Evansville Underground Music. Then amble downtown, where you can enjoy dining and shopping for vintage, antique, repurposed and consigned items.

Historic Leonard-Leota Park is home to a spring-fed lake, popular nine-hole disc golf course, picturesque covered foot bridge and local history museum. During the Fourth of July at the park, fireworks dazzle the sky over the water. Year-round, birdwatchers crow about the avian variety that call the park home. Birdies of another kind are found at the popular 18-hole public golf course at Evansville Golf Club. Nearby, Magnolia Bluff County Park has hiking and equestrian trails with a view for miles, and the Ice Age Trail now takes bikers and hikers through the heart of Evansville.

For more information about how to enjoy the best that Evansville offers, including places to stay, eat and play, please visit:

www.evansvillechamber.org.

Contact the Chamber at 608-882-5131 or EvansvilleChamber@gmail.com.



Leonard-Leota Park Splash Pad



Larson Acres Park



JANESVILLE

Wisconsin's Great Outside

Nature

Hike, bike, snowshoe or cross-country ski on Janesville's extensive trail system. Many species of native trees, plants, and wildlife can be found in these areas.

Birding

Get outside and enjoy Janesville's most scenic natural areas, with a mix of wetland and forested areas that draw both birds and birders. Janesville achieved Bird City designation in 2013 from Bird City Wisconsin.

Public Art Trail

Janesville is home to more than 60 pieces of outdoor public art including 32 large-scale murals, plus sculptures, markers and memorials. Download the brochure at JanesvilleCVB.com to explore the trail.



©Kim Hoholek Photography

Self-Worth Sculpture: Artist Richard Lazcano

Garden Art Project

Visit the award-winning Rotary Botanical Gardens during the summer to explore the annual Garden Art Exhibit. From May to September handcrafted wooden shapes created by Garden volunteers and decorated by local artists are displayed throughout the Gardens.

Dining & Shopping

Discover Janesville's charming downtown where you'll find lots of options for dining and shopping. Many local restaurants offer patio dining and scenic river views.

Janesville Area Convention & Visitors Bureau

20 S Main St., Suite #11 Janesville, WI

608-757-3171 800-487-2757

JanesvilleCVB.com ~ Visit@JanesvilleCVB.com



Sandee's Thai Fusion



Full Spectrum Photography

Rotary Botanical Gardens

Marsha Mood Photography

Explore hundreds of acres of tranquil parkland and miles of peaceful trails. Take in the beauty of our award-winning botanical garden, dine and shop in our charming downtown and experience our 13 historic districts. Savor a craft beer or locally made wine & relax at one of our welcoming and affordable lodging options. Sit back and immerse yourself in live theater or feel the exhilaration as you watch a performance by one of the world's best water-ski shows teams.

Bring the family and enjoy the fun at any of our many festivals and special events including the **Tour of America's Dairyland Janesville Town Square Gran Prix Bike Race, Tallman Arts Festival, Rotary Pie Ride, Art Infusion, Janesville's Jolly Jingle and the Holiday Light Show and Flannel Fest.**

Wisconsin's Great Outside

Janesville is all about savoring the outdoors. Take advantage of our 60 parks including **Traxler Park**, home to the **Rock Aqua Jays Water Ski Show Team** and **Palmer Park**, home to **CAMDEN Playground**, one of the region's largest accessible playgrounds and Palmer Urban Mountain Bike Park. At 246 acres, **Rockport Park** is Janesville's largest park, with lots of activities for kids & teens. It includes the **Peace Park Playground** and Pavilion. **Riverside Park** offers opportunities to enjoy pickleball, shuffleboard, disc golf and river access. It's also home to the **Devil's Staircase**, a segment of the Ice Age Trail. Our 30 miles of trails, including a portion of **Wisconsin's Ice Age Trail**, connect many of our neighborhoods, parks, and attractions. **Skelly's Farm Market** offers three seasons of fun. **Rotary Botanical Gardens** is an award winning, 20-acre non-profit botanic garden, home to many themed gardens. Some have an international focus, such as the Japanese and English Cottage gardens, while others are less formally structured, such as the children's garden. In December, the Gardens presents the spectacular **Holiday Light Show**.

Come Inside

The **Janesville Performing Arts Center's** 633 seat theatre also includes a lobby, art gallery, and black box theatre, and is located in the former historic Janesville High School and features national, regional and local talent. Janesville has a rich history with many buildings of historical interest and 13 historic districts. The **Rock County Historical Society's Lincoln-Tallman Museum** is one of the many Janesville buildings listed on the National Register of Historic Places and tours of the Lincoln-Tallman Museum are available. The Rock County Historical Society serves as a resource for historical research, thought-provoking programming, and one-of-a-kind historic sites. For edge of your seat action catch the **Janesville Jets**, a Junior A hockey team, with exciting home games.

Downtown Janesville

Janesville's vibrant downtown is filled with opportunities for fun, exploration, and discovery. It is rapidly becoming a dining and shopping destination. The scenic Town Square and BHCCU Festival Street area is the hub of downtown and is the location of many of Janesville's events. It features the Blain-Gilbertson Heritage Bridge, a lighted pedestrian bridge that offers scenic views at every turn and an interactive water feature, The Bubbler.

Art Infusion

The **Janesville Area Convention & Visitors Bureau's Art Infusion** event (held annually in September) features a sidewalk chalk competition, and the installation of other pieces of art including large scale painted murals.



Signature Events

Spring & Summer

- Civil War Living History Days (May)
- Concerts at the Gathering Green
- 4th of July Festival
- Pork Roast & Makers Market (August)

Fall

- Twilight Tours of the Milton House Museum (October)
- Junction Function (October)
- Pumpkin Fest (October)

Holidays

- MACC Christmas Walk
- Performance: A Christmas Carol, Milton House Museum



Milton Community Days Event held in Milton, Wisconsin
©Full Spectrum Photography

Welcome to Milton

We invite you to discover our history, hike and bike our wooded trails, boat and fish our lakes, taste a new wine or two, dine at a local supper club or old-fashioned pub, shop one of our boutiques or attend a fun event! Milton is steeped in history and unique opportunities for visitors. It is a friendly, engaging and delightful small town with interesting historic attractions, natural beauty, and charming shops, restaurants, brewery and wineries nestled in the center of scenic southern Wisconsin.

Explore Our Unique History

Tour the National Historic Landmark **Milton House Museum**, an 1844 stagecoach inn and authenticated stop on the Underground Railroad.

Take a self-guided walk through the **Milton College Historic District**, where former college buildings constructed in the mid-1800s have taken on new life.

Attend the **Civil War Living History Days** held annually in May to explore the soldiers' encampment and Underground Railroad, meet Abraham Lincoln, view cannon demonstrations, and more.



Civil War Living History Days
©Kim Hoholek Photography

Outdoor Fun Scenic Trails

- Glacial River Trail
- National Scenic Ice Age Trail
- Rock River Trail

Boating, Fishing & Swimming

- Clear Lake
- Lake Koshkonong
- Storrs Lake

Parks, Playgrounds & Splashpad

- Crossridge Park
- Goodrich Square Splash Pad
- King Park Disc Golf Course & Sledding Hill
- Schilberg Park
- Tails n Trails Dog Park



Ice Age Trail
©Kim Hoholek Photography



Storrs Lake



Timber Hill Winery Igloo

Sip

Milton is home to three unique wineries, and brew pub:

- Northleaf Winery & Taproom
- Timber Hill Winery (new location)
- Fermenting Cellars Winery
- Good Works Brewing

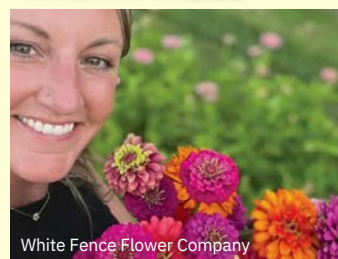
Shop

Milton has two distinct downtowns that offer plenty of exceptional shopping and dining. Here are a just a few:

- Pene Jenta Boutique
- Dragonfly Art Gallery
- White Fence Flower Company
- Sunny + Olive Co
- Red Rooster
- Elmside Goods



Cone Zone
©Full Spectrum Photography



White Fence Flower Company

Dine

Find everything from Wisconsin supper clubs to unique cafes in Milton.

- 59er Bar & Grill
- Buckhorn Supper Club
- Junction Pub
- Fredrick's Supper Club
- Ice ShanTea
- Sharla's Coffee Stop
- Milton Family Restaurant
- Cone Zone

Year-Round Activities

- Milton House Museum
- Self-Guided Historic District Walks
- Ice Age Trail



Sample Itineraries

Family Fun

Bring the whole family!

Rent a campsite or cottage at **Milton KOA** and spend your trip enjoying the pool, game room, disc golf & sand volleyball amenities!

Visit the **Goodrich Square Splash Pad** located right in **Milton**.

Take the kids hiking in **Evansville** on the **Magnolia Bluff** trail, or visit the new **Evansville Aquatic Center** to cool off!

Spend a day in **Janesville**. Start by treating yourself to one of **Mocha Moment's** signature lattes and an **Almond Joy Scone**. Then visit **Palmer Park** and check out the world's largest & most accessible playground - **Camden's Playground!** Spend an afternoon shopping in the downtown area. Finish the night by enjoying dinner at **Whiskey Ranch**.

Travel to **Beloit** for a Friday of downtown shopping, burgers at **Lucy's #7 Burger Bar**, and a visit to **Riverside Park**, home of **Turtle Island** playground. Cool off with an evening paddle boat ride, or enjoy music at **Harry's Place**.



Photo by Mariah Calley

Magnolia Bluff Park in Evansville



Photo courtesy of Visit Beloit

G5 Brewing in Beloit for dinner & drinks!



Northleaf Winery in Milton

Romantic Getaway

Stay in **Beloit** at the **Ironworks Hotel** and splurge on the **Ultimate Date Night Package**, including wine and locally sourced truffles for two!

Visit the new **G5 Brewing** for dinner and drinks, and explore all that **Beloit** has to offer. Be sure to check out the new pub & play space, **Henry Dorrbacker's**, located in downtown **Beloit**, featuring mini golf, duck pin bowling, arcade games, and so much more. Then visit **Harry's Place** for music and dancing during the summer months - romantic dance lessons on the waterfront!

Plan to spend Friday in **Milton** shopping at the **Old Junction Mill** - home to **The Red Rooster** and **Peddlers Loft & Cellar**. Visit **Northleaf Winery** in the evening for a glass of their delicious wine and enjoy the live music. Saturday is perfect for exploring downtown **Janesville** - visit **The Glass Garden** to soak in the beautiful art glass, and **Bodacious Olive** for craft olive oil. Plan a dinner at **Genisa** and treat yourself to fine espresso and pizza or a decadent dessert. Reserve tickets to a comedy show at **Janesville's Comedy Cabin**.

Spend Sunday soaking in the views from **Magnolia Bluff Park** in **Evansville**, and take some time to stroll through the historic homes & businesses.



Catalyst Design & Photography

Henry Dorrbacker's in Beloit

History Buff

Spend a day or two in **Evansville** exploring the over 300 residential & commercial properties listed on the **National Register for Historic Places**, in styles ranging from **Queen Anne** to **Craftsman**.

Visit the historic **Lincoln-Tallman House** in **Janesville**. Then head over to the **Rotary Botanical Gardens** for an afternoon stroll.

Visit the **Milton College Historic District**, where college buildings from the mid 1800's have taken on new life. Don't miss the **Historic Milton House Museum** - Wisconsin's only certified **Underground Railroad** site open for tours. Stop by **Goodrich Antiques & Vintage Uniques** for a little shopping. Also stop by **The Old Junction Mill** - a beautifully renovated feed mill home to stores such as **The Red Rooster** and **Peddlers Loft & Cellar**. Spend your evening at **Northleaf Winery** enjoying live music and sampling a glass of their award-winning wine.

Travel south on Saturday for a guided tour of the old mill at **Beckman Mill Park**.

Genisa

BRICK OVEN PIZZA
WINE BAR & COCKTAILS

FRESH INGREDIENTS
AND INNOVATIVE OFFERINGS



DOWNTOWN JANESVILLE
GENISAWINEBAR.COM

Rock County Accommodations

Legend: P - Pool, B - Breakfast Included, R - Restaurant

CAMPGROUNDS

Blackhawk Campground ~ 3407 E Blackhawk Dr, Milton
~ 608-868-2586

Creekview Campground ~ 748 Albion Rd, Edgerton
~ 608-921-8354

Hickory Hills ~ 856 Hillside, Edgerton ~ 608-884-6327

**Milton KOA Family Campground ~ 872 E Hwy 59, Milton ~
608-868-4141 ~ HiddenValleyMilton.com (P)**

Lakeland RV Camping Resort ~ 2803 Hwy 59, Milton ~
608-868-4700 (P)

Lakeview Campground ~ 1901 Hwy 59, Milton ~ 608-868-7800

BELOIT: HOTEL / MOTEL

Baymont Inn & Suites ~ 2900 Ford St ~ 608-365-8680 (B)

Del-Mae Motel ~ 1850 S Madison Rd ~ 608-362-8888

Driftwood Motel ~ 1826 Riverside Dr ~ 608-364-4081

Fairfield Inn & Suites ~ 2784 Milwaukee Rd ~ 608-365-2200 (PB)

Hampton Inn ~ 2700 Cranston Rd ~ 608-362-6000 (PB)

Hilton Home2Suites ~ 2750 Cranston Rd ~ 608-467-5500 (PB)

Holiday Inn Express ~ 3022 Ford St ~ 608-519-4040 (PB)

Hotel Goodwin ~ 500 Public Ave ~ 608-473-1400 (R)

Ironworks Hotel ~ 500 Pleasant St ~ 608-362-5500 (BR)

Quality Inn ~ 2786 Milwaukee Rd ~ 608-362-2666 (PB)

Super 8 ~ 2790 Milwaukee Rd ~ 608-365-6000 (PBR)



Photo Credit: Catalyst Design & Photography

Hotel Goodwin in Beloit has been awarded the prestigious One MICHELIN Key distinction as part of the inaugural MICHELIN Guide 2024 Hotel Selection.

Hotel Goodwin is among an exclusive group of just 127 properties across the United States to be honored by the world-renowned MICHELIN Guide.

BED & BREAKFASTS AND INNS

Cooksville Farmhouse Inn ~ 11203 N State Rd 138,
Cooksville ~ 608-335-8375 (B)

1810 Emerson House ~ 1810 Emerson St, Beloit ~
608-368-8445 (B)

Guardian Angel B&B ~ 429 Prospect Ave, Janesville ~
608-758-3211 (B)

Prairie Hill Retreat ~ 5130 E US Hwy 14, Janesville ~
608-756-9850

JANESVILLE: HOTEL / MOTEL

AmericInn ~ 3900 Milton Ave ~ 608-371-9981 (PB)

Baymont Inn ~ 616 Midland Rd ~ 608-758-4545 (PB)

Cobblestone Hotel & Suites ~ 20 W Milwaukee St ~
608-757-2200 (PB)

Hampton Inn ~ 2400 Fulton St ~ 608-754-4900 (PB)

Holiday Inn Express & Conference Center ~
3100 Wellington Place ~ 608-756-3100 (PB)

Lannon Stone Motel ~ 1524 E Racine St ~ 608-752-7441

Microtel Inn ~ 3121 Wellington Place ~
608-752-3121 (B)

Motel 6 ~ 3907 Milton Ave ~ 608-756-1742

Northern Town Motel ~ 1409 Center Ave ~
608-754-0251

Quality Inn ~ 3520 Milton Ave ~ 608-754-0251 (B)

Redwood Motel ~ 3912 N Hackbarth Rd ~ 608-756-4500

Super 8 ~ 3430 Milton Ave ~ 608-756-2040

Towneplace Suites by Marriott ~ 2706 Pontiac Place ~
608-898-4200 (PB)

Tru by Hilton ~ 2702 Pontiac Place ~ 608-302-3838 (PB)

EVANSVILLE: HOTEL, RETREAT CENTER

Boarders Inn & Suites by Cobblestone ~ 715 Brown
School Rd ~ 608-882-0936 (B)

The Grove Guesthouse ~ 8 S Madison St ~ 608-290-3433

The Grove Retreat (groups) ~ 5 N Water St ~
608-412-0908 (PB)

EDGERTON AREA: HOTEL / MOTEL

Coachman's Golf Resort ~ 984 Cty Rd A ~
608-884-8484 (PBR)

Quality Inn ~ I-90 & Hwy 59 ~ 608-884-2118 (PB)

Town Edge Motel ~ 1104 N Main ~ 608-884-9328

*Information is subject to change without notice.



ShoreWEST
REALTORS

Rock County's Largest Home Seller



Mary Adamson
608-290-1843



Lynne Forrestal
608-921-3031



Mary Gilbank-
Peterson
608-751-5868



Jenny Hallett
608-290-6555



Mary Johnson
608-289-2386



Molly Leonard
608-728-0103



Kimberly Nickols
608-295-9056



Rhonda Oshel
608-289-9776



Barb Palmby
608-290-2935



Maribel Rodriguez
608-346-3449



Jason Sheridan
608-921-7411



Lynnea
Strickland
608-921-9466



Macy Walter
608-931-0662



Sally Weaver-
Landers
608-346-0569



Karen Williams
608-751-3939



Keira Wilson
262-433-1167



Mandy Fritsche-Norman
Senior Loan Officer NMLS #557211
WI Mortgage Corp NMLS #280412
262-327-5700

LOOKING TO BUY OR SELL A HOME?

Go with Rock County's trusted leader
for **OVER 75 Years.**
608 - 754 - 2121

ShoreWEST
REALTORS

Janesville / Rock County Office
608 - 754 - 2121
4323 Milton Avenue, Suite 200,
Janesville



Visit us online for current listings, a free home value estimate, virtual office tour, and more.
shorewest.com